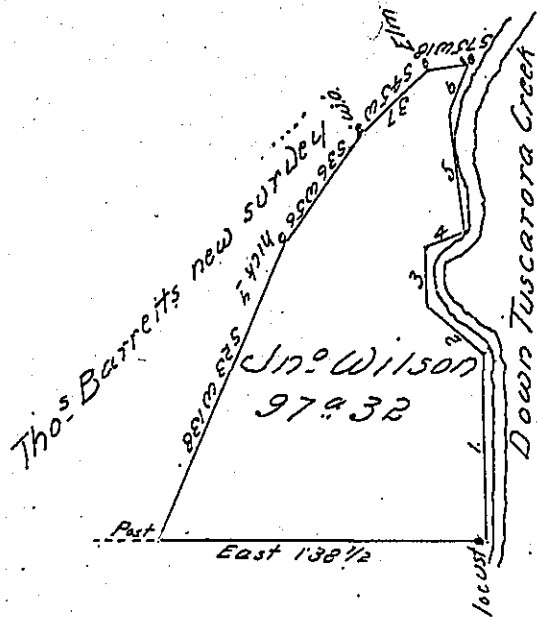


Courses and Distances from
locust down creek to S.W.A.

- 1. North 20
 - 2. N 50 W 32
 - 3. North 26
 - 4. N 68 E 17
 - 5. N 8 W 50
 - 6. N 20 E 22 W.O.
- 227



Ezekiel Dunning

Draught of ninety seven acres and thirty two perches of land with 6 per cent for roads situate in Tuscarora valley in Lack township in Mifflin county, late Cumberland which appears from Official papers remaining in my Office to have been surveyed 3rd June 1767 in pursuance of a warrant to John Wilson dated 24th February 1763

Examined 18th May 1814 without making allowance for Magnetic Variation

To Richard T. Leech Esquire
Surveyor General of Pennsylvania

IN TESTIMONY that the above is a copy of the original remaining on file in the Department of Internal Affairs of Pennsylvania, made conformably to an Act of Assembly approved the 16th day of February, 1833, I have hereunto set my Hand and caused the Seal of said Department to be affixed at Harrisburg, this second day of February 1904.

James B. Brown
Secretary of Internal Affairs.